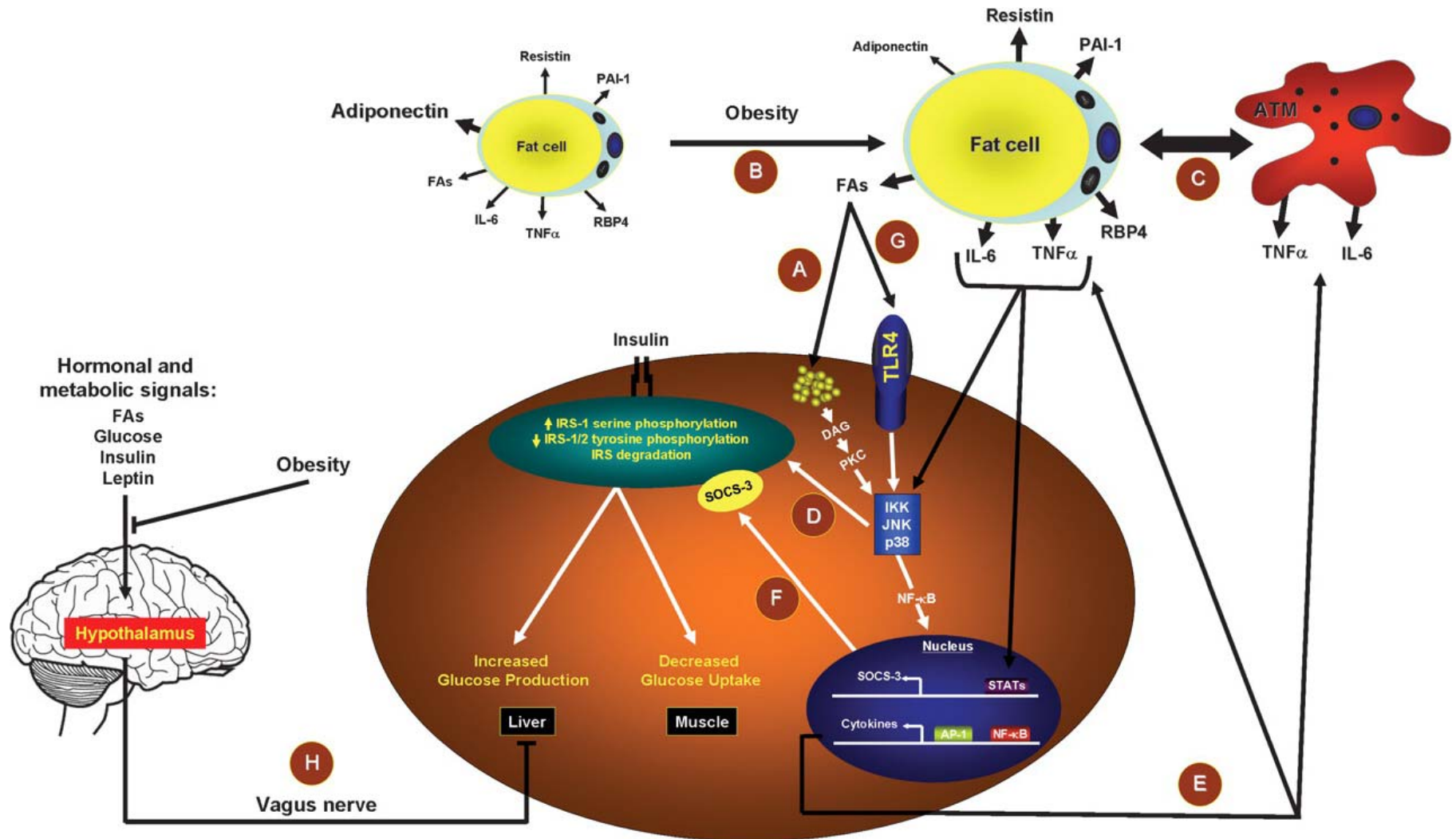


Importance of SHIP2 gene in obesity induced muscle insulin Resistance: Focuses on palmitate

Sattar Gorgani-Firuzjaee, Saeedeh Ahmadi and Reza Meshkani

Dept. of Biochemistry, Faculty of Medicine, Tehran University of Medical Sciences

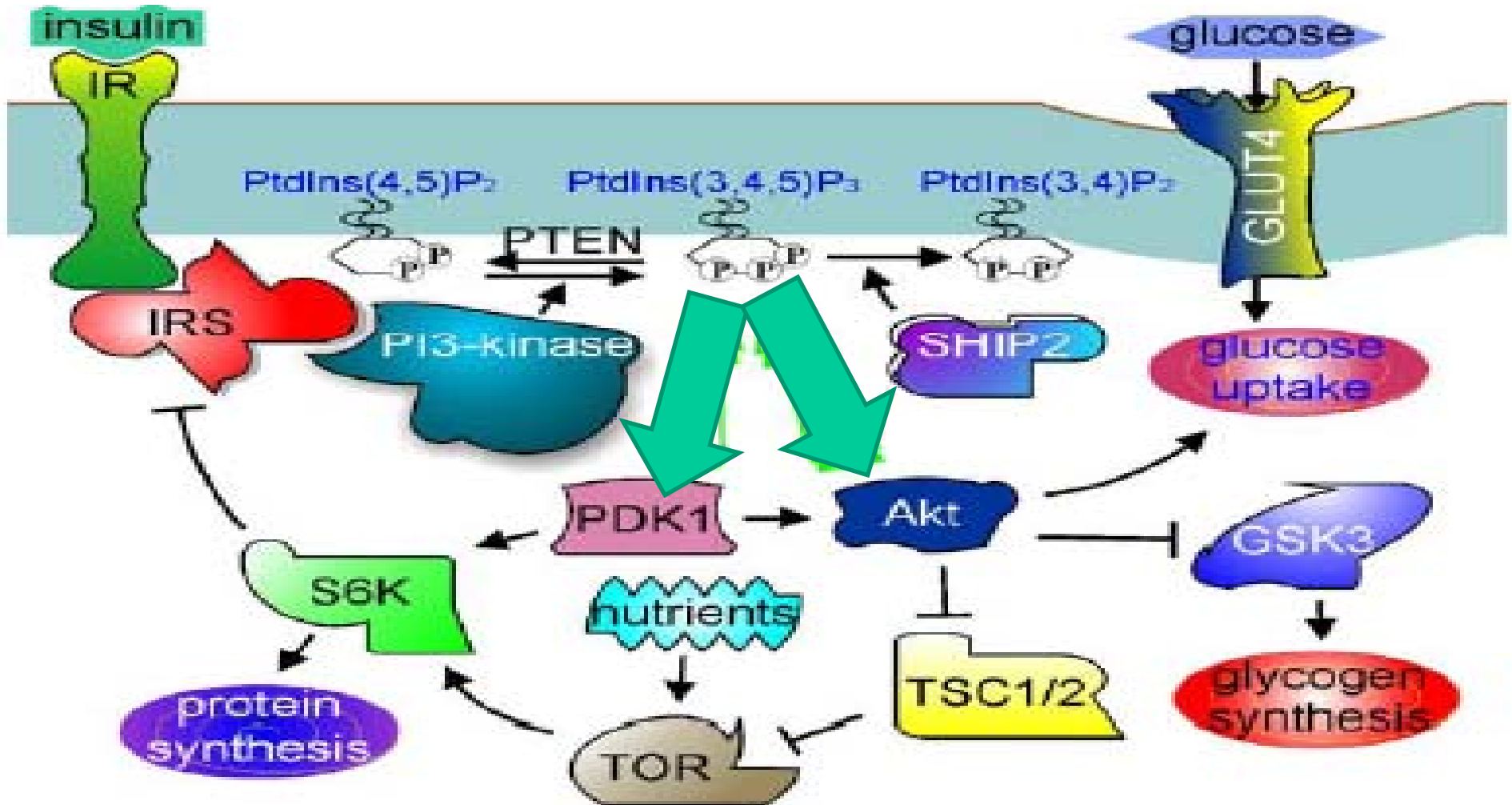
Pathways link obesity to insulin resistance



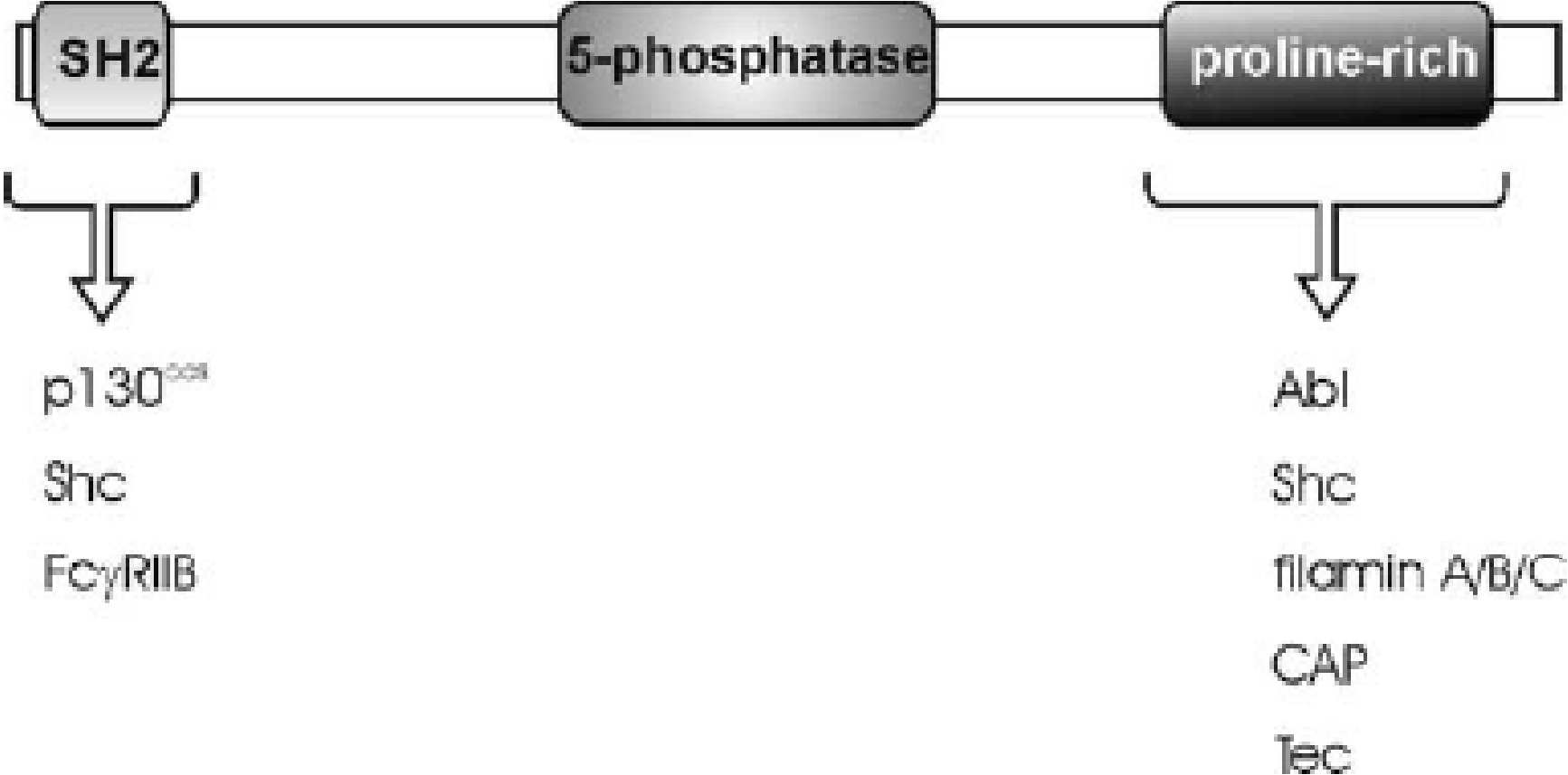
Qatanani M , and Lazar M A Genes Dev. 2007;21:1443-1455



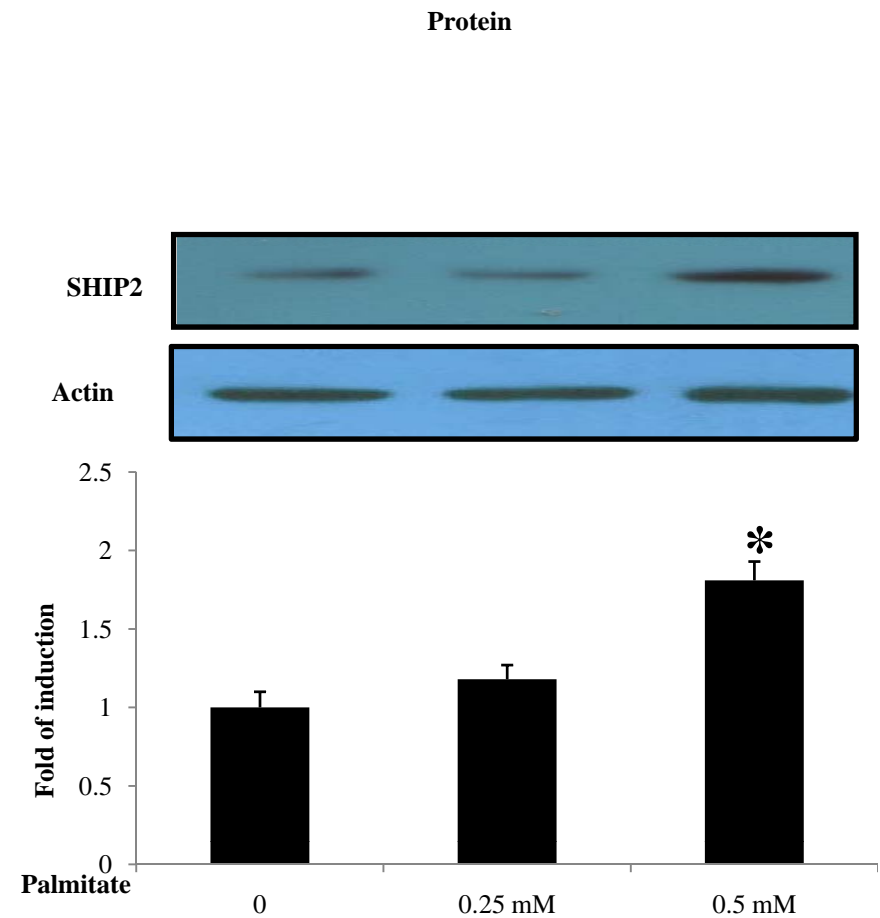
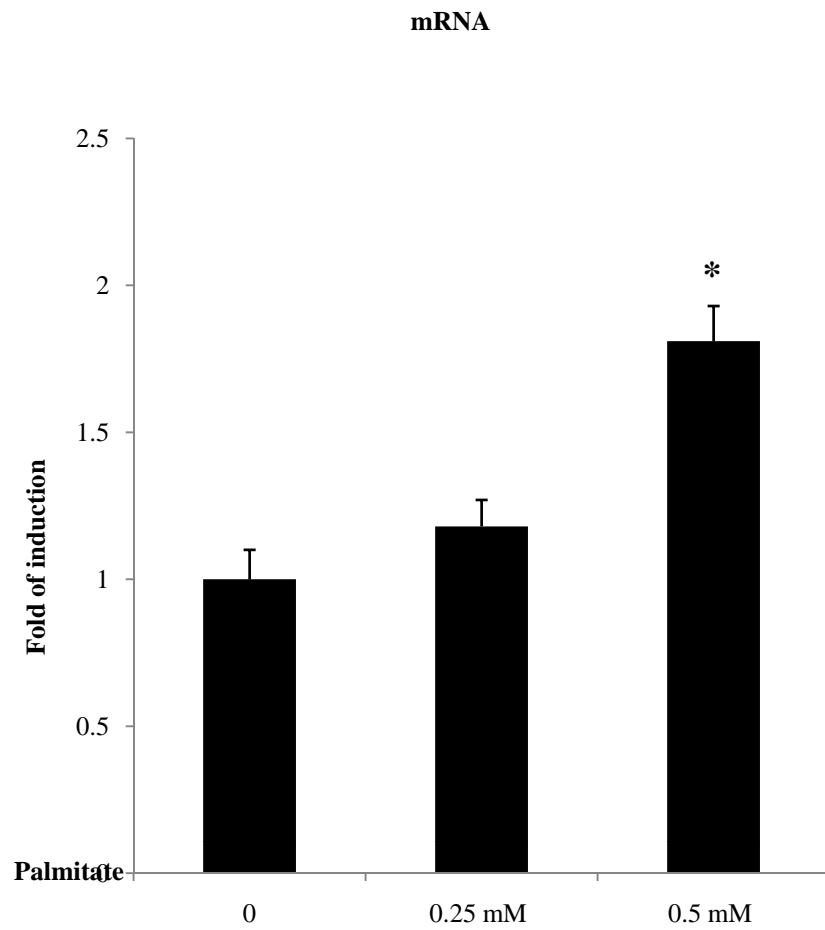
Role of SHIP2 in insulin signaling



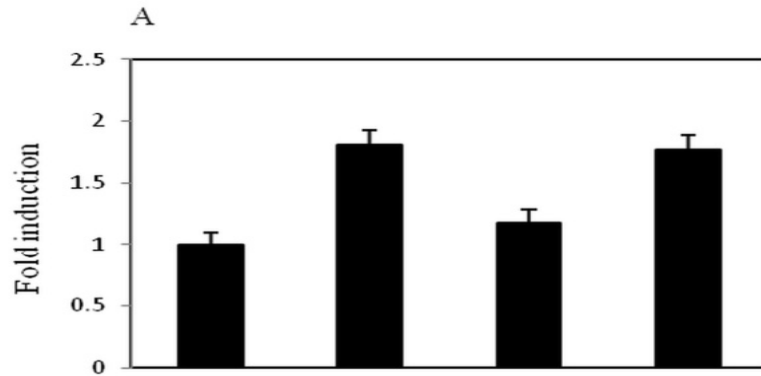
Structure of Sh2 containing inositol phosphatases (SHIP2)



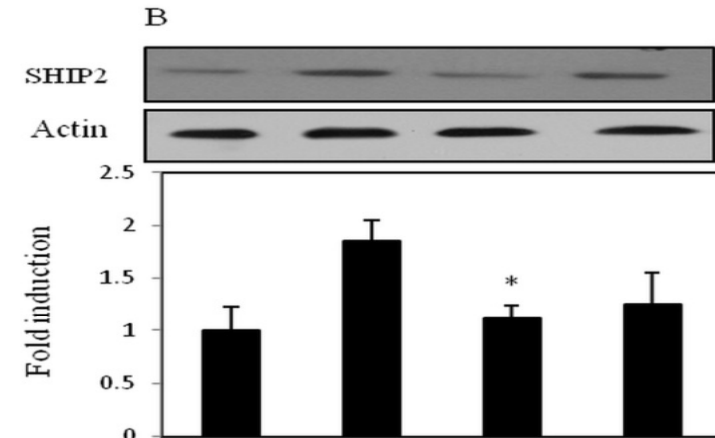
Palmitate effect on SHIP2 Expression



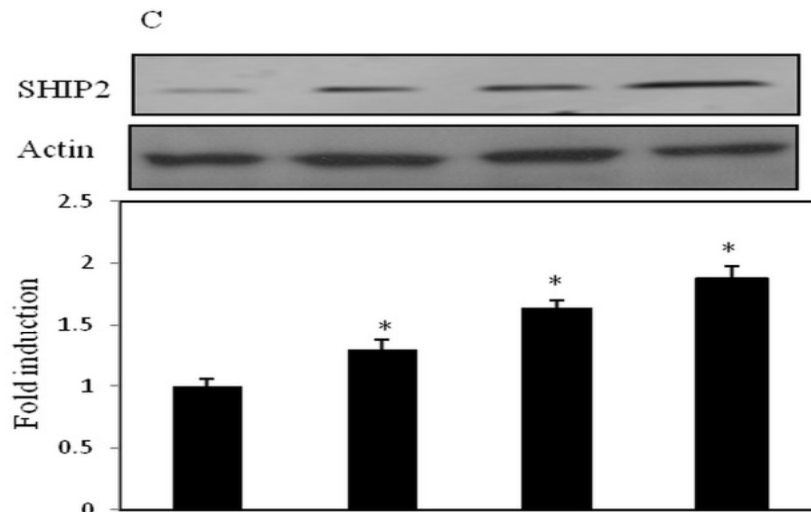
The role of ceramide and diacylglycerol pathways in palmitate-induced SHIP2 expression



Palmitate (0.5mM)	-	+	+	+
Myorcin	-	-	+	-
Calphostin	-	-	-	+

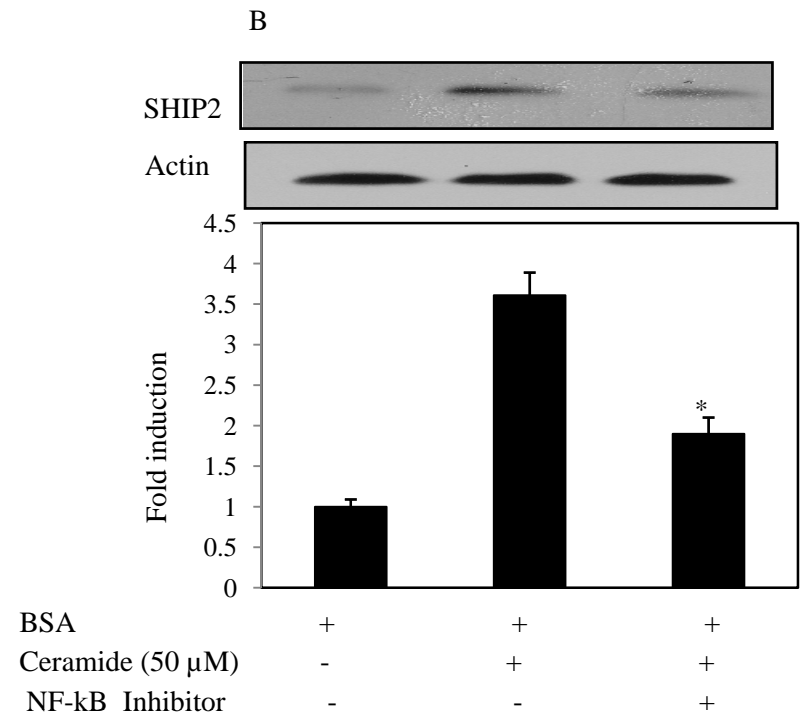
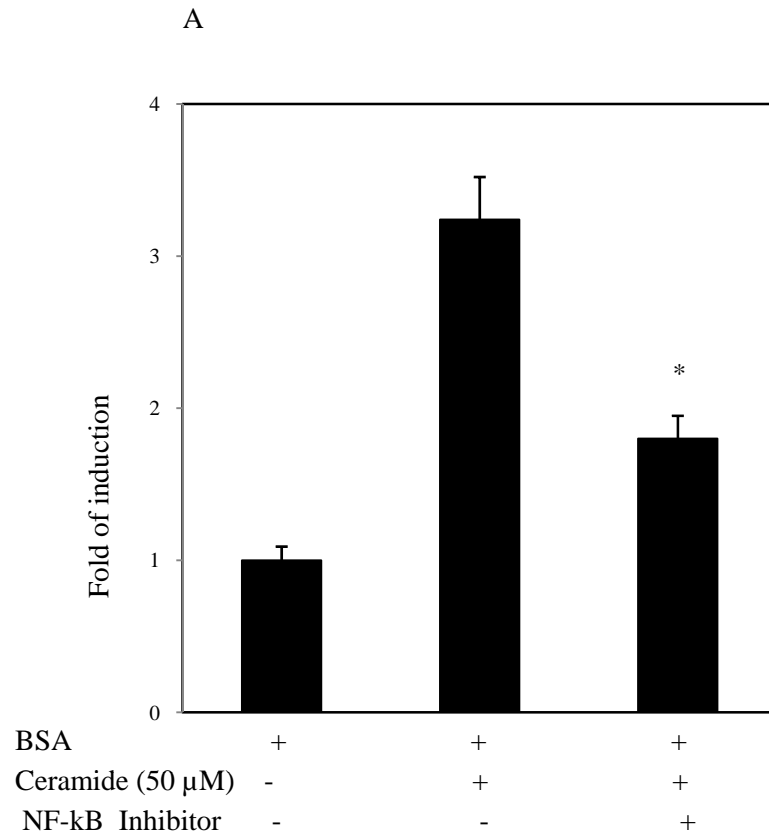


Palmitate (0.5 mM)	-	+	+	+
Myorcin	-	-	+	-
Calphostin	-	-	-	+

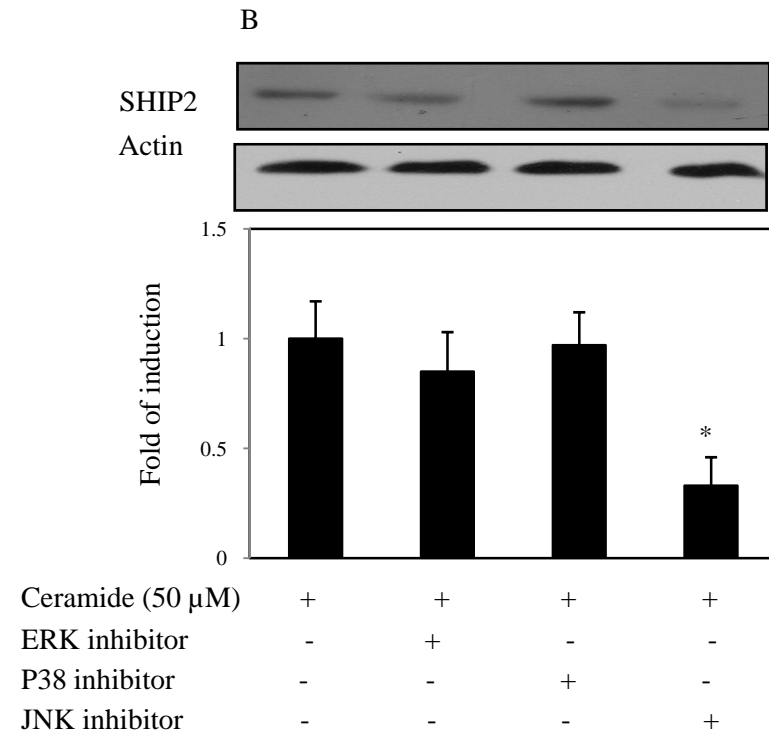
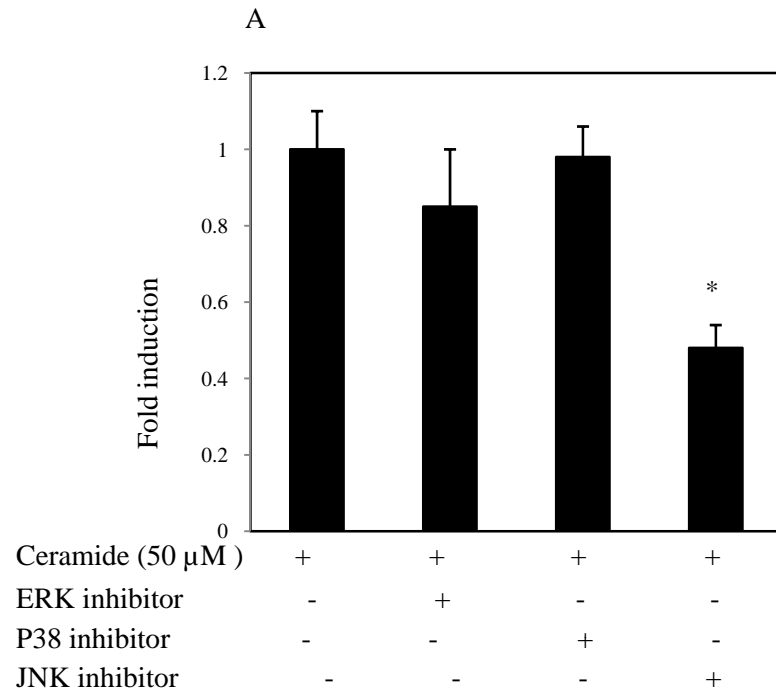


Ceramide (μM)	0	20	50	100
---------------	---	----	----	-----

Role of NF- κ B in palmitate-induced SHIP2 expression



Importance of MAPK signaling in ceramide-induced SHIP2 expression



Schematic model representing the mechanism by which palmitate induces SHIP2 expression in skeletal muscle cells.

